

ANALOG CLOCK

# FLEX

**VARIABLE WITH CLASS**

*The Swiss Flex analog clock has been ticking, accurate to the millisecond, since 1999. With a variety of technical variations and options, it is suitable for nearly every space and purpose.*



---

# THE BENEFITS OF THE FLEX ANALOG CLOCK

---

*The name Flex stands for excellent flexibility and countless possibilities. Flex adapts to any underlying conditions, whether they relate to technical operating requirements, time codes, installation options or design, and meets requirements with precision.*



## CUSTOMIZABLE

Installation and operation function smoothly, because technology and design adapt to the application – even when integrated into existing systems.



## SELECTABLE TIME CODE

The Flex supports all common synchronization and input types. This also allows it to be well integrated into existing systems.



## ROBUST CONSTRUCTION

Flex is a long-term investment. The solid Swiss native is sophisticated, time-tested over many years, durable, and easy to maintain.



## HOUSING & INSTALLATION

From shatterproof glass for the gymnasium to hygienic chrome steel covers for hospitals – Flex offers the right housing and several installation options.



## SUPPORT

From planning to installation and during operation and maintenance – you can get answers to your questions and, if needed, support from our specialists.



**Factory**  
FLEX Ø30, one-sided, illuminated, dial 000



**School**  
FLEX Ø30, one-sided, dial 120, in concrete case (BD)



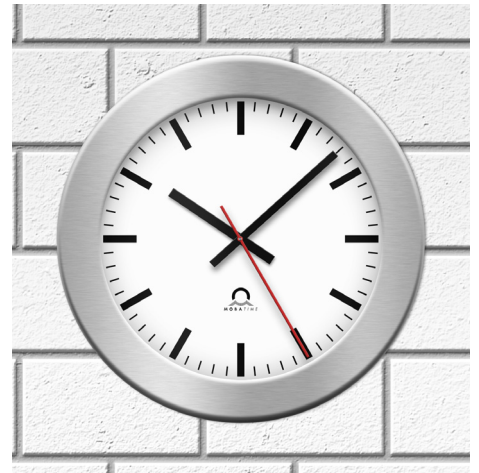
**Gymnasium**  
FLEX Ø30, one-sided, dial 120, impact-resistant cover glass and housing, with mounting clips (MK)



**Hospital**  
FLEX Ø30, two-sided, dial 160, with 50cm ceiling set (DS.50)



**Library**  
FLEX Ø30, two-sided, dial 210, with wall and ceiling set (WS)



**Office**  
FLEX Ø30, one-sided, dial 200, in mounting box (ED)



**Airport**  
FLEX Ø50, two-sided, dial 210, with ceiling set Ø50 (DS)



**Train station**  
FLEX Ø60, two-sided, dial 120, with ceiling set Ø60-80 (DS)



**Custom**  
FLEX Ø30, one-sided, with customer-specific dial and hands, in mounting box (ED)

# 6 STEPS TO YOUR FLEX

To make sure your Flex solution meets all your requirements, you can assemble the components individually. You can also choose from optional parts. Configure the perfect Flex, suited to rooms and general conditions. Naturally, our experts will be happy to help.

## 1. How big does your Flex need to be?

### SIZE

The Flex is available in six sizes (diameters). Please note the recommended optimal reading distance.

∅	OPTIMAL READING DISTANCE
25 cm	15 meters
30 cm	20 meters
40 cm	30 meters
50 cm	40 meters
60 cm	60 meters
80 cm	90 meters



## 2.

Would you like the one-sided or the two-sided version?

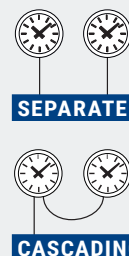
### SHAPE

For the two-sided Flex solution, you can order two identical Flex models and the corresponding installation set (see page 9)

### TWO-SIDED FLEX

## Cascading

For two-sided clocks, two identical one-sided watches with separate synchronization and power supply are usually used. If you use cascading, the clocks' functions can be connected directly to each other. Cascading is possible with the following technical combinations:



PRIMARY MOVEMENT	SECONDARY MOVEMENT	∅ CM	INPUT	SYNCHRONIZATION
SAN 40/SEN 40	SAN 40/SEN 40	25-40	PoE	NTP
NBU 190	NBU 190	50-80	24V/PoE	NTP
FU 192	BU 192	50-80	3.6V Lithium battery Option: 230V	DCF
GU 192 V2	BU 192	50-80		GPS
QU 192	BU 192	50-80		Quartz

# 3.

## The Flex analog clock offers a variety of time code variants. Pick yours:

### TIME CODE

MOBALINE SELF-SETTING: MXX					
Code	Time code	Ø	Power supply	Hands	Movement
M00	MOBALine	25-40	MOBALine	h/m	SAM 40
M21	MOBALine	25-40	MOBALine	h/m/s	SEM 40
M15	MOBALine	50-80	MOBALine	h/m	SAM 100
M17	MOBALine	50-80	MOBALine	h/m/s	SEM 100

NTP (LAN) SELF-SETTING: NXX					
Code	Time code	Ø	Power supply	Hands	Movement
N20	NTP	25-40	PoE	h/m	SAN 40
N10	NTP	50-80	PoE	h/m	NBU 190 PoE
N00	NTP	50-80	230 V (24 VDC)	h/m	NBU 190 24 + PS24
N21	NTP	25-40	PoE	h/m/s	SEN 40
N12	NTP	50-80	PoE	h/m/s	NBU 190 S PoE
N02	NTP	50-80	230 V (24 VDC)	h/m/s	NBU 190 S 24 + PS24

POLARIZED PULSES: LXX					
Code	Time code	Ø	Power supply	Hands	Movement
I00	Min. pulse	25-40	12-60 V	h/m	NU 90k
I01	Min. pulse	50-80	12-60 V	h/m	NU 90m
I03	Min. pulse	25-40	24 V	h/m	NU 91k
I04	Min. pulse	50-80	24 V	h/m	NU 91m
I20	Min. pulse	30-80	12-60 V 45-265 VAC	h/m	IBU 190 S
I30	Sec. pulse	25-40	24-60 V	h/m/s	SEI 40

SERIAL: SXX					
Code	Time code	Ø	Power supply	Hands	Movement
S00	Serial	30-80	230 V	h/m	SU 190 230
S02	Serial	30-80	230 V	h/m/s	SU 190 S 230

IRIG/AFNOR: TXX					
Code	Time code	Ø	Power supply	Hands	Movement
T50	IRIG/AFNOR	30-80	230 V	h/m	ATBU 190 230
T52	IRIG/AFNOR	30-80	230 V	h/m/s	ITBU 190 S 230

WTD WIRELESS TIME DISTRIBUTION: RXX					
Code	Time code	Ø	Power supply	Hands	Movement
R75	WTD	25-30	2 x AA battery	h/m	SAW 00
R76	WTD	25-30	2 x AA battery	h/m/s	SEW 00
R77	WTD	25-30	230 V	h/m	SAW 00 MPS
R78	WTD	25-30	230 V	h/m/s	SEW 00 MPS
R79	WTD*	40-80	Lithium battery	h/m	BU 192 + RU
R87	WTD*	50-80	230 V	h/m	SAM 100 + RM + PS24
R89	WTD*	50-80	230 V	h/m/s	SEM 100 + RM + PS24

\* with receiver interface

DCF 77 / MSF: RXX					
Code	Time code	Ø	Power supply	Hands	Movement
R21	DCF 77	25-40	AA battery	h/m/s	FWUt
R25	DCF 77*	50-80	Lithium battery	h/m	FU 192
R32	MSF 60*	50-80	Lithium battery	h/m	BU 192 + AM 192
R00	DCF / MSF**	30-80	230 V	h/m	BU 190 230
R03	DCF / MSF**	50-80	230 V	h/m/s	BU 190 S 230

\* internal antenna (not possible with BW or DD housing)

\*\* without antenna, external antenna required

GPS: RXX					
Code	Time code	Ø	Power supply	Hands	Movement
R50	GPS (mouse antenna)	50-80	Lithium battery	h/m	GU 192 V2
R60	GPS*	30-80	230 V	h/m	BU 190 230 + PS24
R62	GPS*	50-80	230 V	h/m/s	BU 190 S 230 + PS24

\* coded for GPS 4500 (not included)

QUARTZ: QXX (ALL WITH UNICAST AND MULTICAST)					
Code	Time code	Ø	Power supply	Hands	Movement
Q21	Quartz	25-40	AA battery	h/m/s	DQt
Q01	Quartz	50-80	Lithium battery	h/m	QU 192

For special clockwork/time code variants, see document TE-800800 at [www.mobatime.com](http://www.mobatime.com) in the Customers section

# 4.

## Which dial design do you like?

### DIAL

The Flex offers the following standard designs. For custom variants, material requests, logo prints, and finishes, please contact our customer service.



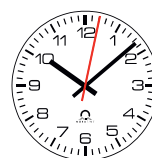
dial 120



dial 160



dial 200



dial 210



dial 230



dial 300



dial 310



dial 315



dial 360



dial 000 (LED)

# 5. Which type of glass is the right one?

## GLASS TYPE

Depending on the intended use and budget, three types of glass are available.

### Mineral glass (code 0)

The high-quality, durable standard glass holds up against aggressive cleaning agents, and is therefore ideal for medical applications.

### Ball-throw resistant (code 1)

The extra-stable, shockproof glass is suitable for school buildings, sports halls, and industrial applications.

### Plexiglas Resist (code 2)

The nearly indestructible Plexiglas is shatterproof, and therefore ideal for use in the food industry.

# 6. Which housing type do you need?

## HOUSING TYPE

Extremely stable, extremely low-noise, extremely hygienic. Each housing offers different benefits. Which one fits your intended use?

### FLEX Standard (code 00)

The standard housing with mineral glass is the classic solution for most applications (e.g. offices).

### Stainless steel V2A (code 01)

The stainless steel housing is used in applications with the highest hygienic requirements, such as hospitals.

### Steamtight (DD) (Code 02)

This housing is suitable for all steamy environments such as commercial kitchens, butcher's shops, indoor swimming pools, etc.

### Ball-throw resistant (BW) (Code 03)

Combined with ball-throw resistant glass, a FLEX with this housing can really take a beating.

## ILLUMINATED FLEX CLOCKS

### Illumination

See examples on page 3. Clocks with the ZB 000 face (see page 5, step 4) can be outfitted with an LED ring. To do so, replace the standard abbreviation FL0 in the order code with FL2. The following options with illumination are possible:

TYPE	Ø CM		MOVEMENT		HOUSING
FL.2.	30	.R1.	M00 = SAM 40	.000.0.	00 = Standard
	40		M21 = SEM 40		01 = Chrome steel V2A
			N20 = SAN 40		
			N21 = SEN 40		

## YOUR FLEX IS COMPLETE

You can now order your Flex and calculate the corresponding code. Enter the abbreviation for each component of your choice in the bright field and find your Flex code. It serves as the order code or as the foundation for further steps. The overview on page 8 shows whether your wishes are compatible.

<b>My Flex clock</b>		FL.0.
<b>1. Size</b>	Ø cm	<input type="text"/>
<b>2. Shape</b>	Code	<input type="text" value="R1"/>
<b>3. Time code</b>	Code	<input type="text"/>
<b>4. Dial</b>	Code	<input type="text"/>
<b>5. Glass type</b>	Code	<input type="text"/>
<b>6. Housing type</b>	Code	<input type="text"/>
<b>Sequence number</b>	Code	<input type="text" value="0000"/>

Example order code: FL0.30.R1.M00.0.01.0000

The four-digit sequence number at the end of the designation code denotes special versions (e.g. clocks with a special dial). When ordering, please indicate the sequence number with 0000 (standard version); we will adapt this for any special version. Special versions can be reordered at any time stating the sequence number.

## Any more requests? We have additional special options for you.

You can find various installation variants on page 9. We can also meet your special requests: special finishes, color variants, logo prints, etc. Visit our website:



[WWW.MOBATIME.COM](http://WWW.MOBATIME.COM)

---

*Whatever moves you at the moment – we are there for you. MOBATIME*



# IS IT COMPATIBLE?

The following overview shows which components can be combined. Please check this before ordering. We are happy to answer any questions by telephone or e-mail.

Ø		Ø25	Ø30 normal	Ø30 steamtight	Ø30 ball-throw resistant	Ø40 normal	Ø40 steamtight	Ø40 ball-throw resistant	Ø50 normal	Ø50 steamtight	Ø50 ball-throw resistant	Ø60 normal	Ø60 steamtight	Ø60 ball-throw resistant	Ø80 normal	Ø80 steamtight	Ø80 ball-throw resistant
MOBALine	M00 / M21	•	•	•	•	•	•	•									
	M15								•	•	•	•	•	•	•	•	•
	M17									•	•	•	•	•	•	•	•
NTP	N00 / N10								•	•	•	•	•	•	•	•	•
	N02 / N12									•	•	•	•	•	•	•	•
	N20 / N21	•	•	•	•	•	•	•									
Pulse	I00 / I03 / I30	•	•	•	•	•	•	•									
	I01 / I04								•	•	•	•	•	•	•	•	•
	I20		②	•	•	②	•	•	•	•	•	•	•	•	•	•	•
Serial	S00		①	•	•	①	•	•	•	•	•	•	•	•	•	•	•
	S02		②	•	•	②	•	•	•	•	•	•	•	•	•	•	•
IRIG/AFNOR	T50		①	•	•	①	•	•	•	•	•	•	•	•	•	•	•
	T52		②	•	•	②	•	•	•	•	•	•	•	•	•	•	•
WTD	R75 / R76 / R77 / R78	•	•	•	•												
	R79					①	•	•	•	•	•	•	•	•	•	•	•
	R87								•	•	•	•	•	•	•	•	•
	R89									•	•	•	•	•	•	•	•
DCF 77/MSF	R00		①	•	•	①	•	•	•	•	•	•	•	•	•	•	•
	R03								•	•	•	•	•	•	•	•	•
	R21	•	•			•											
	R25 / R32								•	•	•	•	•	•	•	•	•
GPS	R50								•	•	•	•	•	•	•	•	•
	R60		①	•	•	①	•	•	•	•	•	•	•	•	•	•	•
	R62		②			②				•	•	•	•	•	•	•	•
Quartz	Q01								•	•	•	•	•	•	•	•	•
	Q21	•	•	•	•	•	•	•									
Dials	Dial 000		•	•	•	•	•	•									
	Dial 120	•	•	•	•	•	•	•	•	•	•	•	•	•	•	•	•
	Dial 160	•	•			•	•	•									
	Dial 200	•	•	•	•	•	•	•									
	Dial 210	•	•	•	•	•	•	•									
	Dial 230	•	•	•	•	•	•	•									
	Dial 300	•	•	•	•	•	•	•	•	•	•	•	•	•	•	•	•
	Dial 310	•	•	•	•	•	•	•									
	Dial 360	•	•	•	•	•	•	•									
Cover glass	0 Standard	•	•		•	•	•	•	•	•	•	•	•	•	•	•	•
	1 Ball-throw resistant	•	•	•		•	•	•	•	•	•	•	•	•	•	•	•
	3 Plexiglas Resist				•			•				•		•			•
Housing	00 Standard	•	•			•			•			•			•		
	01 Stainless steel V2A		•			•			•								
	02 Steamtight			•	•		•	•		•	•		•	•		•	•
	03 Ball-throw resistant				•		•			•			•				•
Accessories	Wall/Ceiling set	•	•			•											
	Ceiling suspension		•	•	•	•	•	•	•	•	•	•	•	•	•	•	•
	Wall mounting ring		•			•											
	Mounting clips			•	•		•	•	•	•	•	•	•	•	•	•	•
	Mounting box		③														
	Concrete case		③			③											
Ø		25	30	30	30	40	40	40	50	50	50	60	60	60	80	80	80

- ① wide housing
- ② wide housing, domed glass
- ③ normal housing only

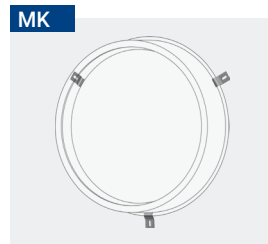


# INSTALLATION VARIANTS

*One- or two-sided model? Wall or ceiling installation?  
Here, you can find the right installation solution for every clock.*



**Wall mounting ring**  
Snap-on installation for one-sided clocks.



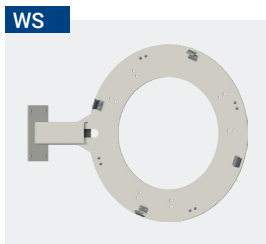
**Mounting clips**  
Ball-throw resistant wall installation for one-sided clocks.



**Mounting box**  
Flush-mounted box made of stainless steel.



**Concrete case**  
Concrete case made of wood, with front ring made of steel.



**Wall and ceiling set**  
Suspension clip for ceiling or wall installation made of steel, snap-on installation.



**Ceiling set Ø25-40**  
Ceiling suspension with snap-on installation. Ring made of steel, pipe and flange made of plastic.



**Ceiling set Ø50**  
Ceiling suspension with clamping ring made of steel, for clocks Ø50.



**Ceiling set Ø60-80**  
Ceiling suspension with clamping ring made of steel, with clocks Ø60-80 and clocks with BW/DD housing.



**Blind cover**  
Empty clock housing for the rear cover of one-sided clocks on suspensions, made of steel.



**Ceiling flange**  
Alternative flange for ceiling set Ø25-40, made of steel.

## Order code information

CODE	INSTALLATION VARIANT	25	30	40	50	60	80
FL.Ø.WM	Wall mounting ring	•	•	•			
FL.Ø.MK	Wall mounting clips	•	•	•	•	•	•
FL.Ø.WS	Wall and ceiling set*	•	•	•			
FL.Ø.DS.LL	Ceiling set* (LL=50/100**)	•	•	•			
FL.Ø.DF	Broad ceiling flange for DS.LL*	•	•	•			
FL.Ø.DS	Ceiling set* (length = Ø clock)				•	•	•
FL.Ø.BA	Blind cover		•	•			
FL.30.ED	Mounting box		•				
FL.Ø.BD	Concrete case		•	•			

\* also available in V2A (add **.V2A** at the end of the order code, e.g. FL.40.WS.V2A)

\*\* other lengths on request

# TECHNICAL DATA

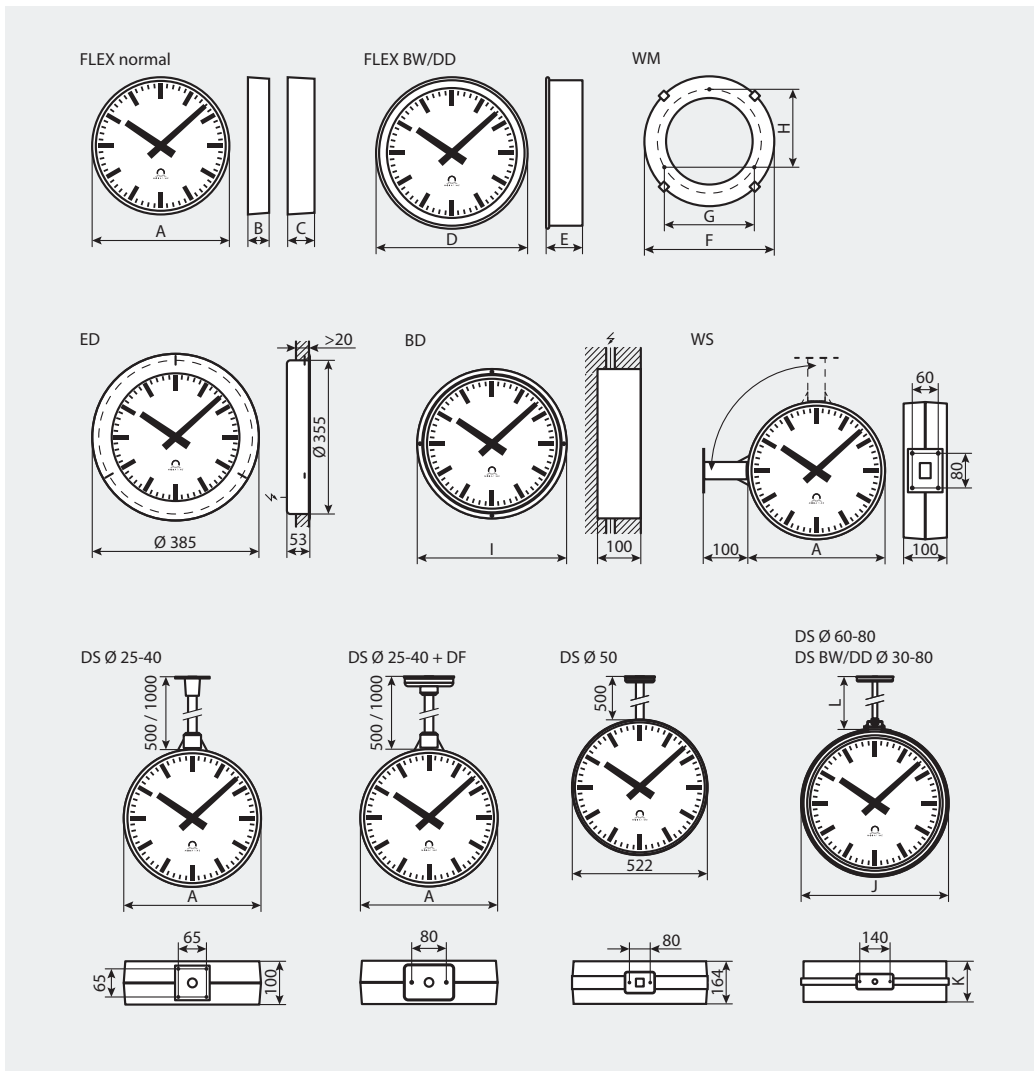
Ø	FLEX NORMAL				FLEX BW/DD			WM			BD	DS		
	A	B	C	Weight	D	E	Weight	F	G	H	I	J	K	L
25	265	49	62*	0,8	-	-	-	252	190	154	-	-	-	-
30	317	49	62*	1,0	350	84	2,5	300	208	180	345	352	168	300
40	417	49	62*	1,7	462	86	4,2	400	285,8	247,5	447	464	172	400
50	520	74	92**	3,2	564	92	7	-	-	-	-	566	184	500
60	680	94	-	6,5	680	94	11	-	-	-	-	682	188	600
80	895	108	-	14	895	108	22	-	-	-	-	897	216	800

Weights for accessory parts on request. All dimensions in mm and weights in kg.

A/B = normal housing; A/C = broad housing; D/E = BW/DD housing

\* for series 100, 190, and 192 clockworks

\*\* for series 100 and 190 clockworks with second hand



*Do you have any questions?  
We are happy to help.*

Moser-Baer AG | Spitalstrasse 7 | CH-3454 Sumiswald  
Tel. 034 432 46 46 | Fax 034 432 46 99  
info@mobatime.com | www.mobatime.com

