



Stainless steel analog clock for wall or flush mounting

Model Series **SLH-OP**

The model series SLH-OP is optimally suited for use in operating theaters, clean room environments, chemical plants, laboratories, swimming and fitness centers, as well as in the food and beverage industry, canteen kitchens, etc.

Your advantages at a glance:

- Polished stainless steel blind frame for flush wall or tile mounting in solid or cavity walls
- Simple assembly thanks to the MOBATIME click system
- Integrated wall mounting housing for protection against dust and dirt
- Double-sided highly transparent float glass with anti-reflection protection against optical interference
- Highly resistant against cleaning and disinfection agents

SLH-OP - Technical details

Housing

- Rust-free stainless steel blind frame with polished surface (grain 240)
- Assembly using the MOBATIME click system with double-sided highly transparent float glass
- Highly resistant against cleaning and disinfection agents
- Galvanized wall mounting housing with low installation depth of just 75 mm
- Low-noise emission through massive construction
- Protection class IP 54 for wall mounting
- Option: housing frame for wall surface mounting

Dial and hands

- Dial made of aluminum
- 250 x 250 mm, white with black print:
 - normal bar form "type 300" or
 - Arabic numbers "type 310"
- Hands made of aluminum: h/m in black, s in red
- Dial and hands according to DIN 41091/92
- Running mode of minute and second hands adjustable by means of DIP switches: stepwise or continuous (except NU 90) (SEI 40: minute hand only).

SLH-OP clocks are available with the following movements:

SAM (h/m): SAM 40

MOBALine slave movement for operation as self-setting slave clock

SEM (h/m/s): SEM 40

Same as SAM but with second hand

SAN (h/m): SAN 40

NTP slave movement for operation as self-setting analog clock, powered via PoE (Power over Ethernet), synchronized by an NTP Server (e. g. DTS) via unicast or multicast

SEN (h/m/s): SEN 40

Same as SAN but with second hand

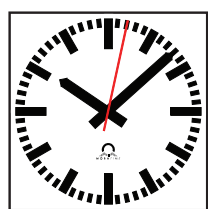
A (h/m): NU 90

Minute impulse movement for operation as a standard minute impulse analog clock, 24 or 48 V

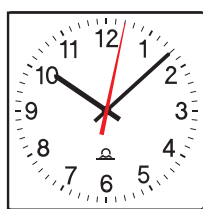
SEI (h/m/s): SEI 40

Same as A but for operation with second impulses, 22 - 72 V

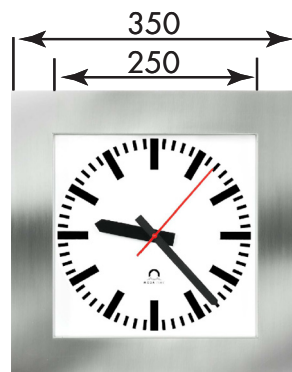
Technical Data										
Clock type	Movement type	Diameter	h/m hands	h/m/s hands	24 V pulses	Minute pulses	Second pulses	MOBALine	LAN / NTP multicast	PoE (Power over Ethernet)
SLH-OP	A	25	✓		✓	✓				
SLH-OP	SEI	25		✓	✓		✓			
SLH-OP	SAM	25	✓					✓		
SLH-OP	SEM	25		✓				✓		
SLH-OP	SAN	25	✓						✓	✓
SLH-OP	SEN	25		✓					✓	✓



Type 300



Type 310



Order example: SLH-OP.A.25.300

clock type.movement.diameter.dial

Dimensions of wall mounting housing:
320 x 320 mm, depth 75 mm
Dimensions of wall cut-out:
325 x 325 mm